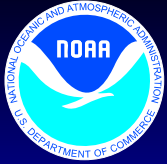


# NOAA's NWS National Performance Measures FY 2006 – FY 2012

Government Performance Requirements Act (GPRA) Performance Measure	Goals	Actual	Goals					
	2006	2006	2007	2008	2009	2010	2011	2012
<b>Weather and Water Goals</b>								
Tornado Warnings - Accuracy (%)	76	<b>75</b>	76					
Tornado Warnings - False Alarm Rate (%)	75	<b>79</b>	75					
Tornado Warnings - Lead Time (Min)	13	<b>13</b>	13					
Storm-Based Tornado Warning Accuracy (%)				*67	69	70	70	72
Storm-Based Tornado False Alarm Rate (%)				*74	72	72	72	70
Storm-Based Tornado Warning Lead Time (Min)				*11	12	12	12	13
Flash Flood Warnings - Accuracy (%)	89	<b>89</b>	89	90	90	90	90	90
Flash Flood Warnings - Lead Time (Min)	48	<b>49</b>	48	49	49	49	49	49
Hurricane Track Forecasts (48 Hours Forecast Error, RMS)	111	<b>97</b>	110	109	108	107	106	105
Precipitation Forecast – Day-1 Threat Score (%)	28	<b>30</b>	29	29	29	30	30	31
Winter Storm Warnings - Accuracy (%)	90	<b>89</b>	90	90	90	90	90	91
Winter Storm Warnings - Lead Time (Hours)	15	<b>17</b>	15	15	15	16	16	16
Hurricane Intensity Error (Knots)				14	13	13	13	12

\* New performance measures to coincide with the implementation of more precise storm-based warnings.

**“America’s Weather Enterprise: Protecting Lives, Livelihoods, and Your Way of Life”**



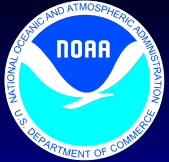
# NOAA's NWS National Performance Measures FY 2006 – FY 2012

Government Performance Requirements Act (GPRA) Performance Measure	Goals	Actual	Goals					
	2006	2006	2007	2008	2009	2010	2011	2012
<b>Climate Goals</b>								
U.S. Seasonal Temperature – Skill	18	25	19	19	19	20	20	21
<b>Commerce and Transportation Goals</b>								
Aviation Forecasts (Ceiling and Visibility) - Accuracy (%) (1 mi/500 ft or less)	47	43						
Aviation Forecasts (Ceiling and Visibility) - False Alarm Rate (%) (1 mi/500 ft or less)	65	64						
Aviation Forecasts (Ceiling and Visibility) - Accuracy (%) (less than 3 mi/1000 ft)			*62	63	64	65	66	67
Aviation Forecasts (Ceiling and Visibility) - False Alarm Rate (%) (less than 3 mi/1000 ft)			*45	44	43	42	41	40
Marine Wind Speed Forecasts - Accuracy (%)	58	55						
Marine Wave Height Forecasts - Accuracy (%)	68	70						
Marine Wind – Percentage of Accurate Forecasts			**68	68	69	69	69	70
Marine Wave Height – Percentage of Accurate Forecasts			**73	73	74	74	74	75

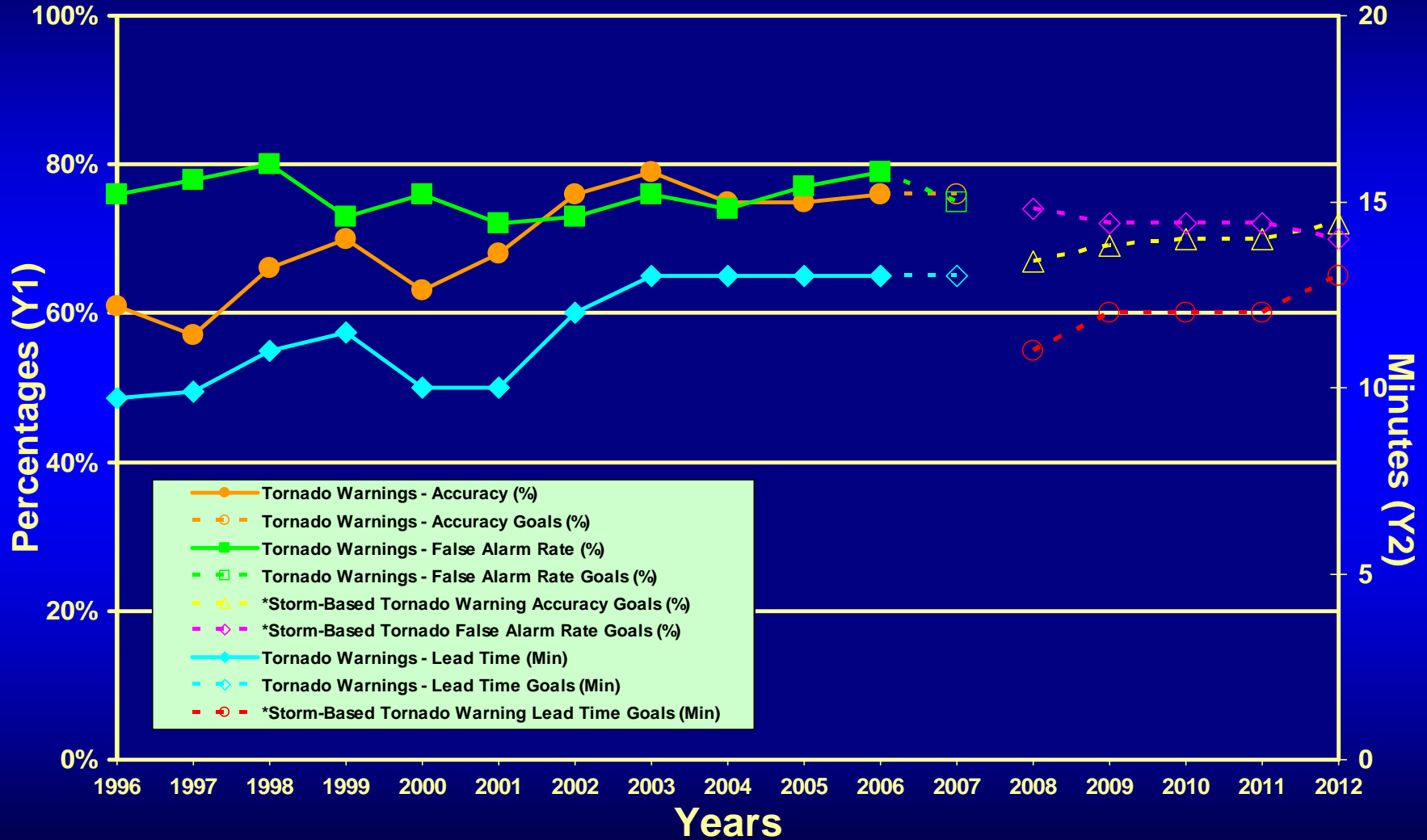
\* Modified performance measures to be more meaningful and relevant to the aviation community and the forecaster.

\*\* New performance measures to best represent forecast accuracy.

**“America’s Weather Enterprise: Protecting Lives, Livelihoods, and Your Way of Life”**

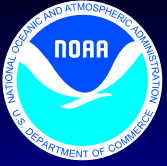


# Tornado Warnings

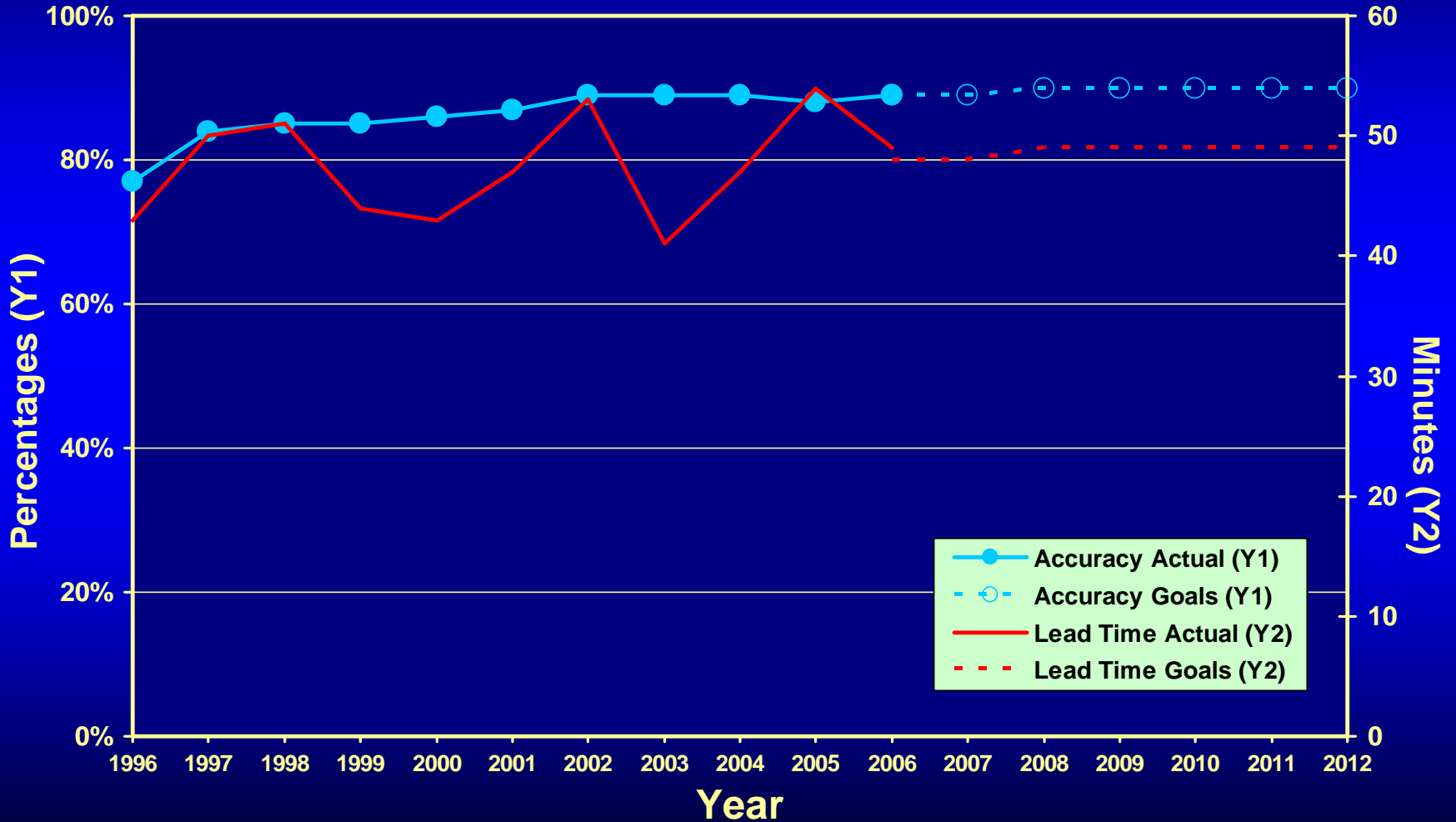


\* New performance measures to coincide with the implementation of more precise storm-based warnings.

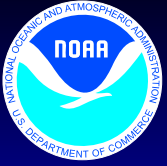
**"America's Weather Enterprise: Protecting Lives, Livelihoods, and Your Way of Life"**



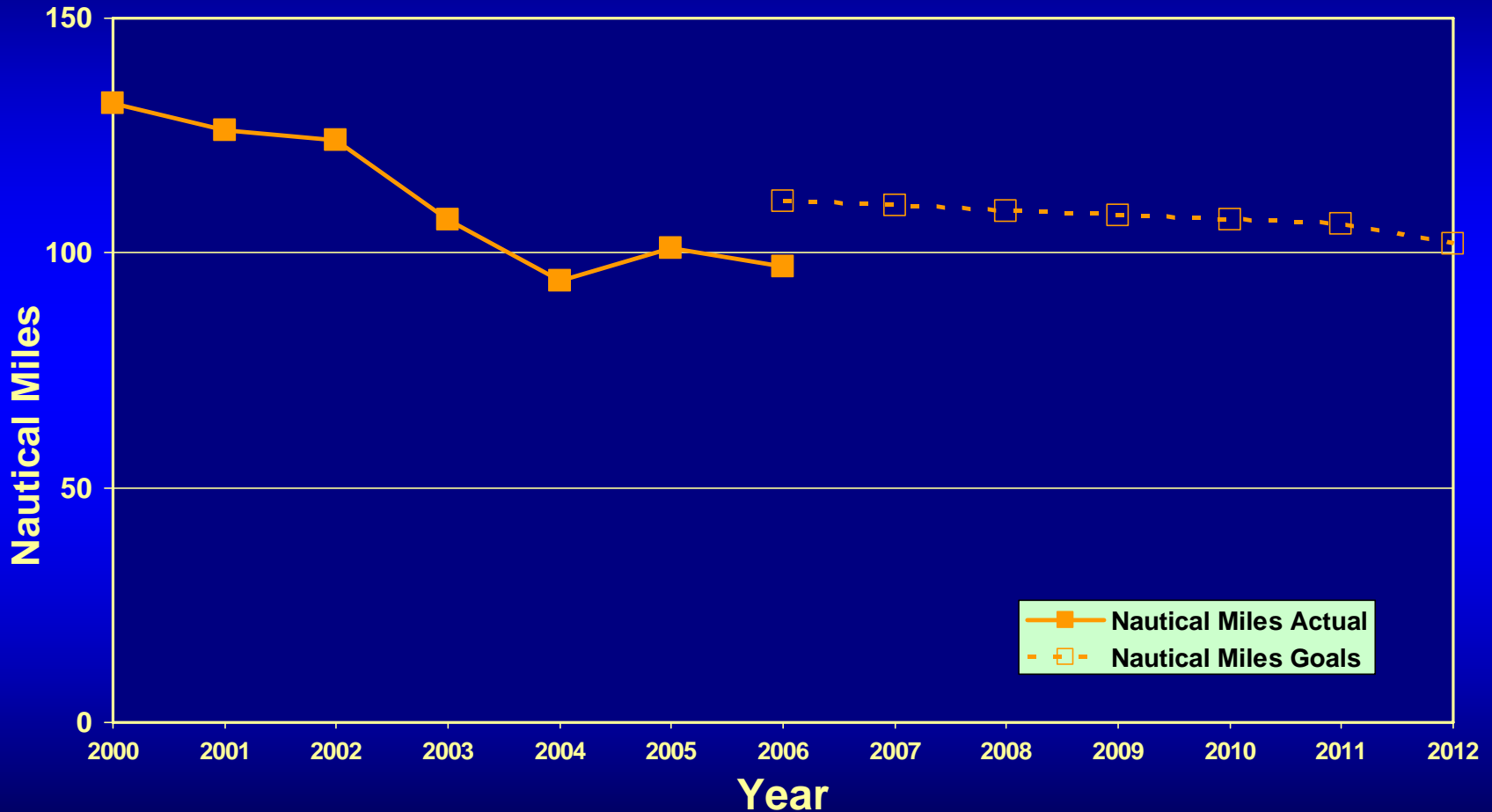
# Flash Flood Warnings



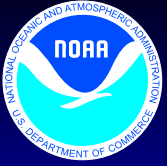
*"America's Weather Enterprise: Protecting Lives, Livelihoods, and Your Way of Life"*



# Hurricane Track Forecasts (48Hrs Forecast Error, RMS)

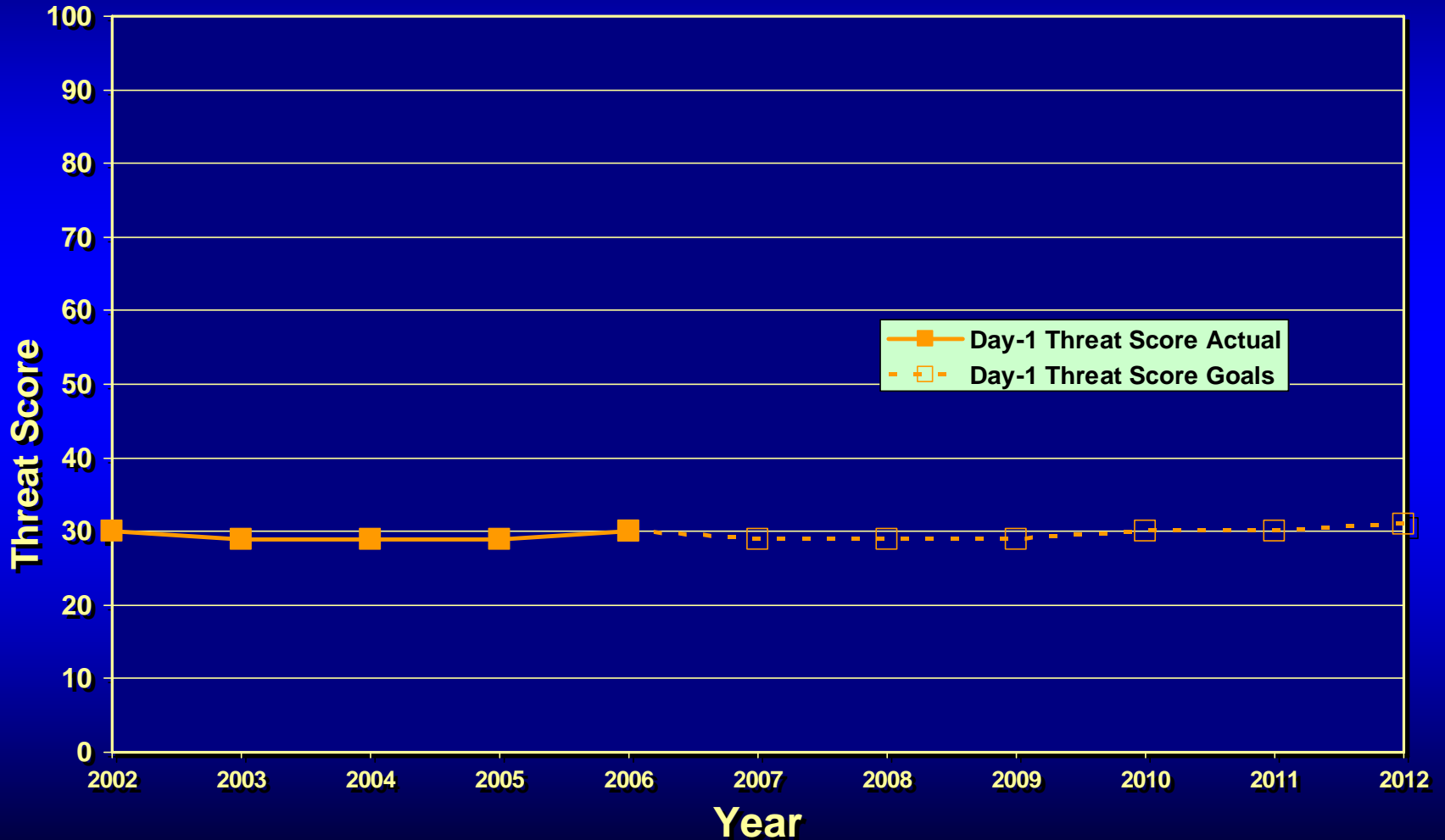


*"America's Weather Enterprise: Protecting Lives, Livelihoods, and Your Way of Life"*



# Precipitation Forecast

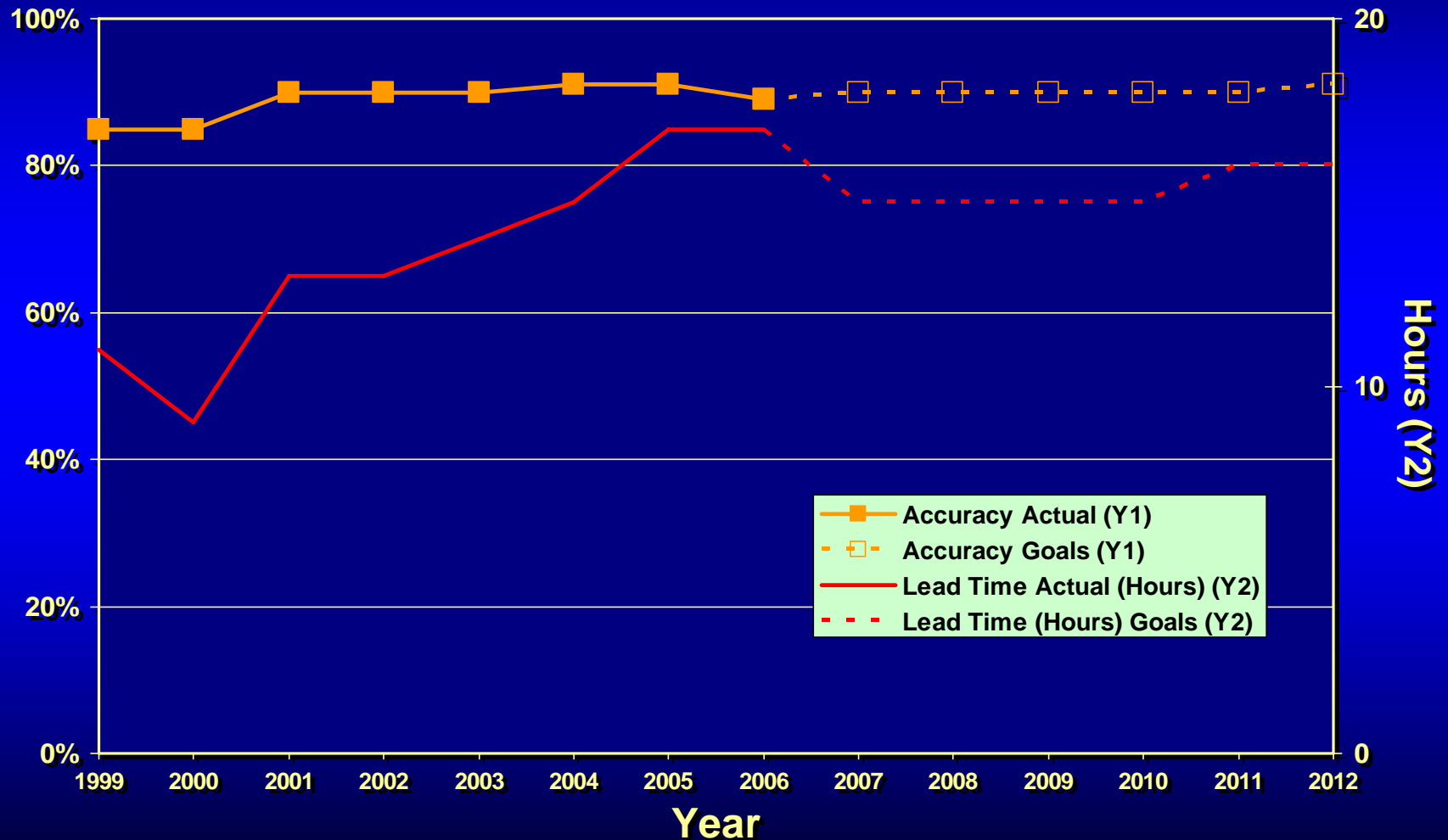
## *(Day-1 Threat Score)*



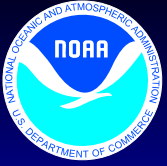
*"America's Weather Enterprise: Protecting Lives, Livelihoods, and Your Way of Life"*



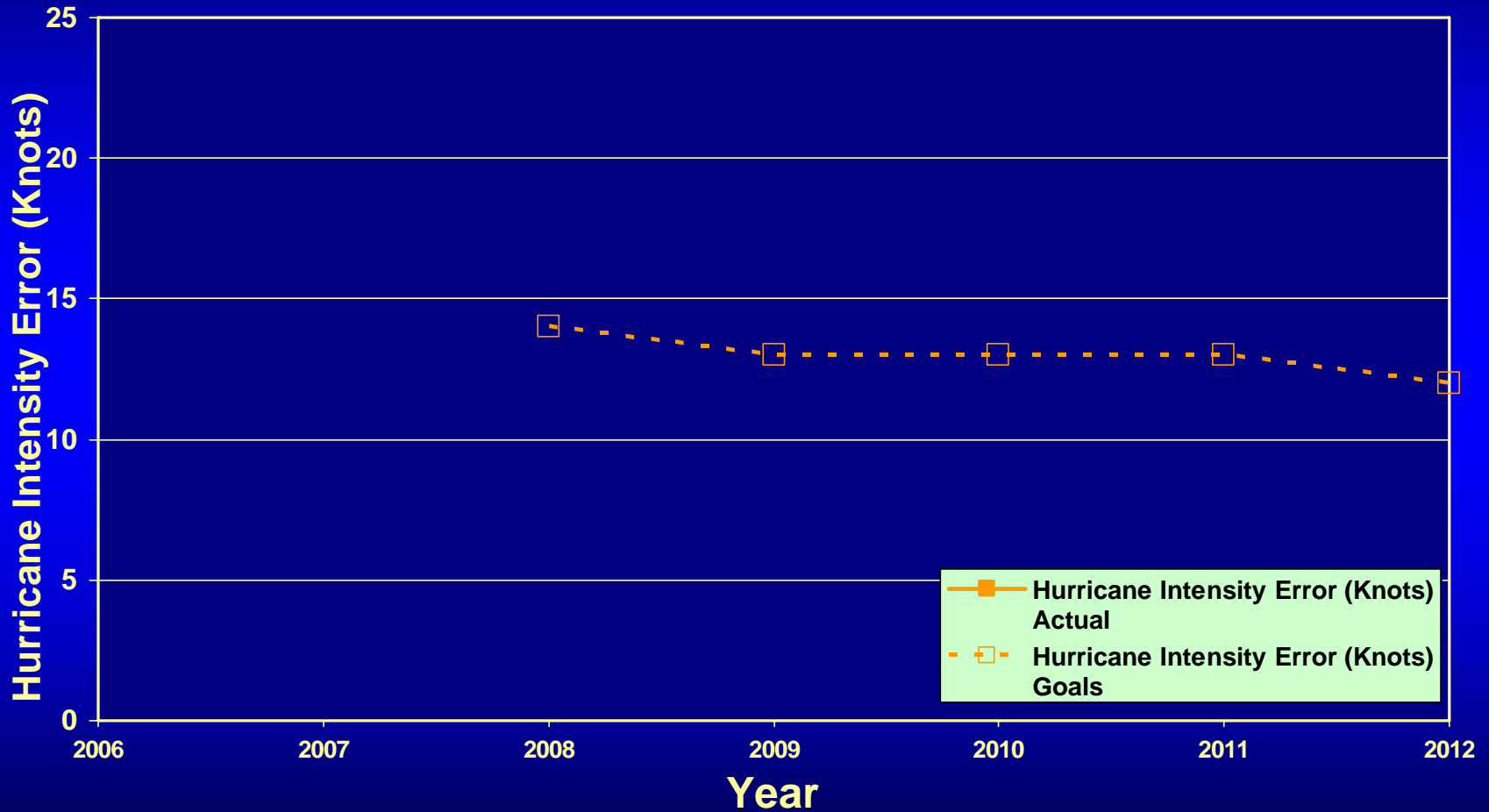
# Winter Storm Warnings



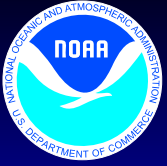
*"America's Weather Enterprise: Protecting Lives, Livelihoods, and Your Way of Life"*



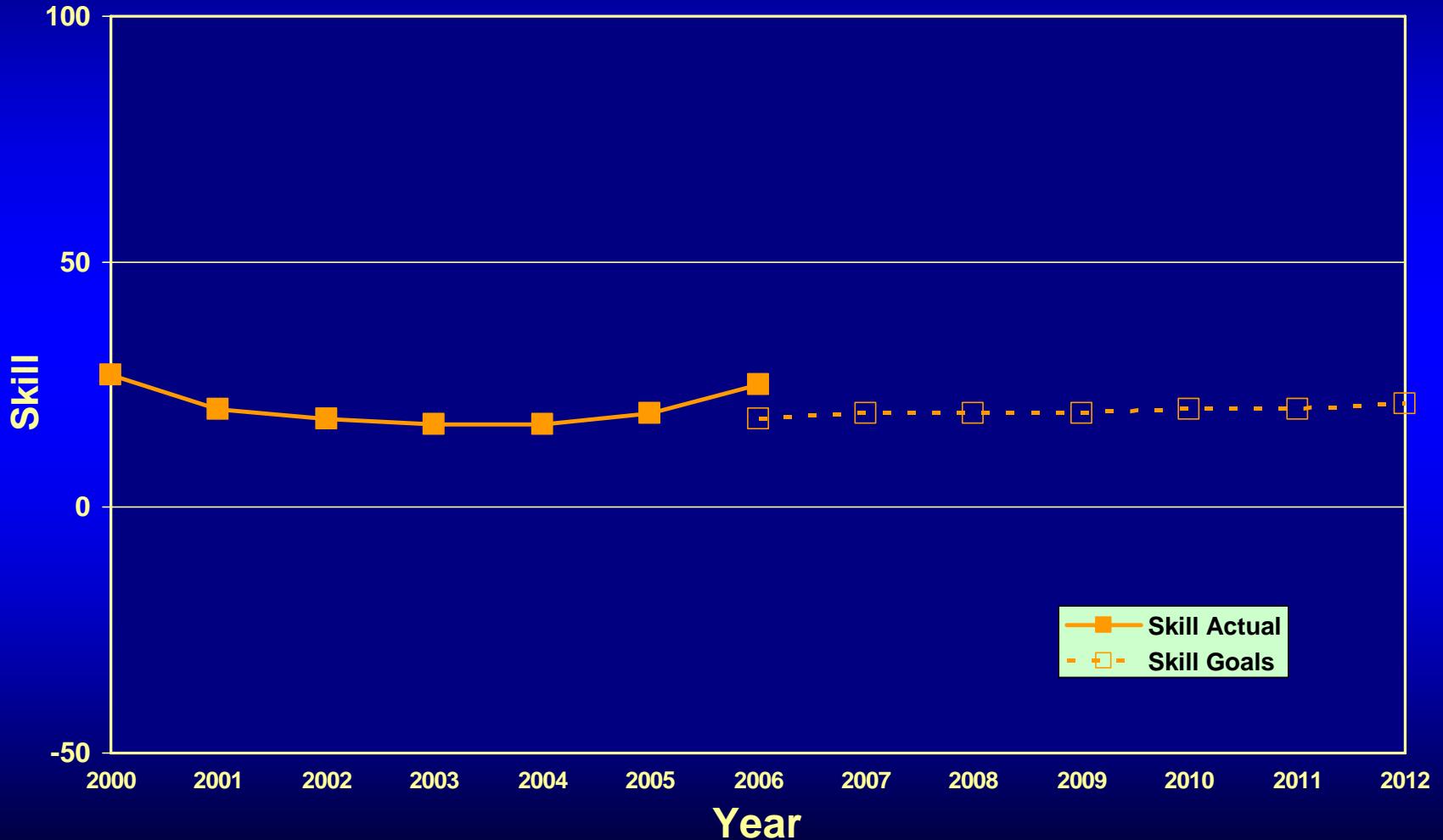
# Hurricane Intensity Error (Knots)



*"America's Weather Enterprise: Protecting Lives, Livelihoods, and Your Way of Life"*



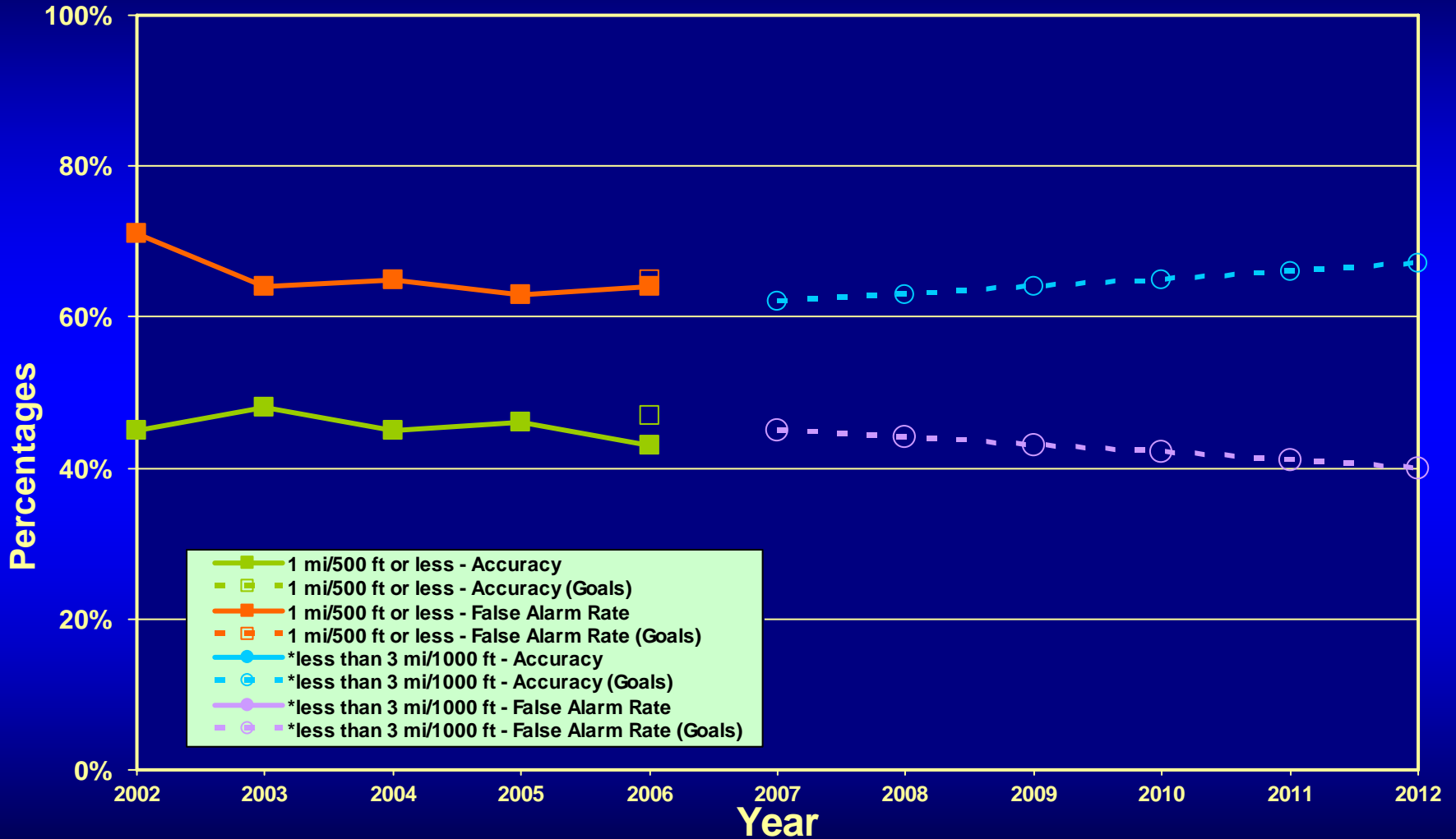
# U.S. Seasonal Temperature - Skill



*"America's Weather Enterprise: Protecting Lives, Livelihoods, and Your Way of Life"*



# Aviation Forecasts (Ceiling/Visibility Forecast)

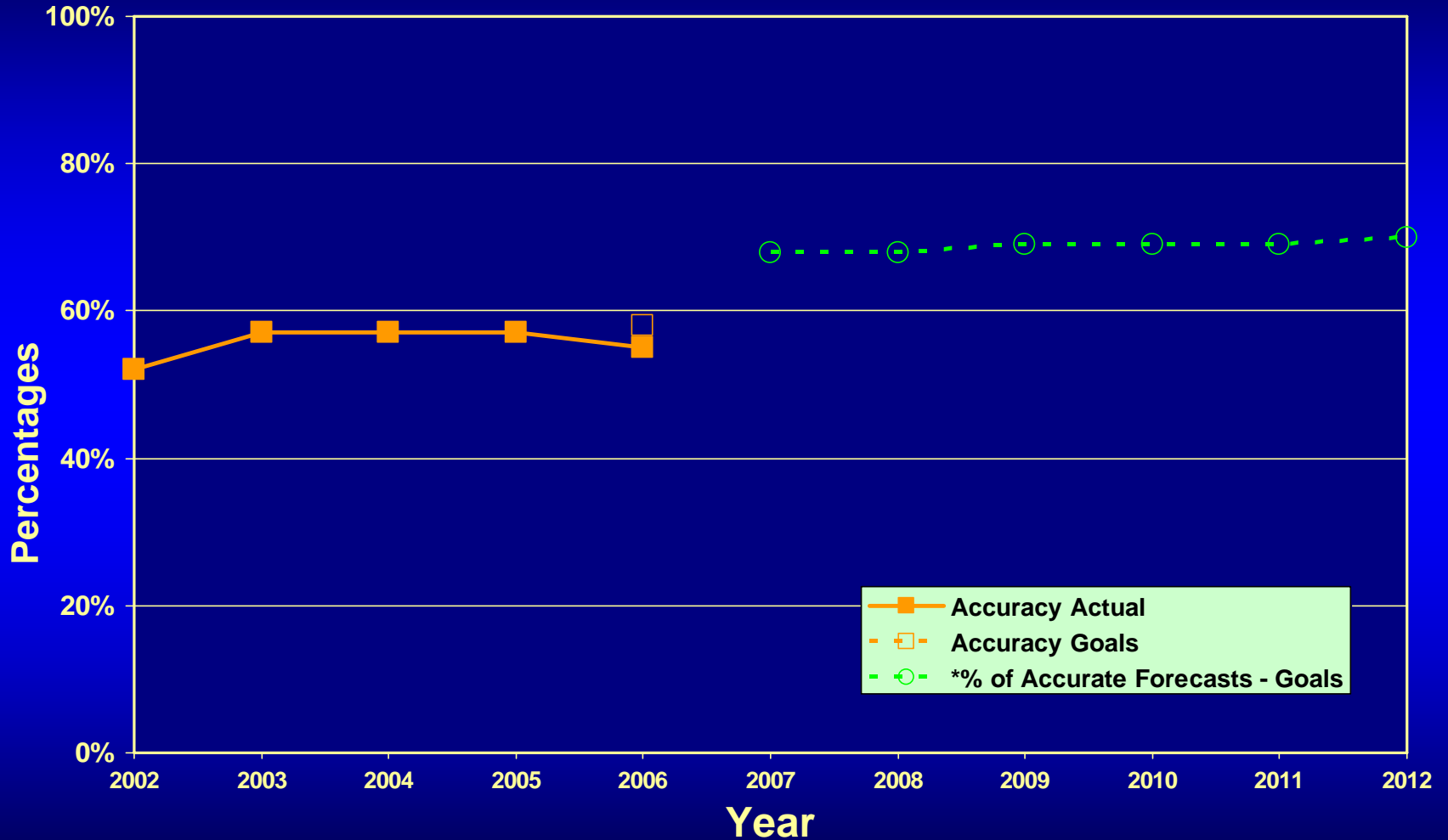


\* Modified performance measures to be more meaningful and relevant to the aviation community and the forecaster.

**"America's Weather Enterprise: Protecting Lives, Livelihoods, and Your Way of Life"**

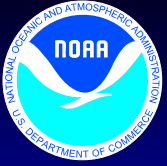


# Marine Wind Speed Forecasts

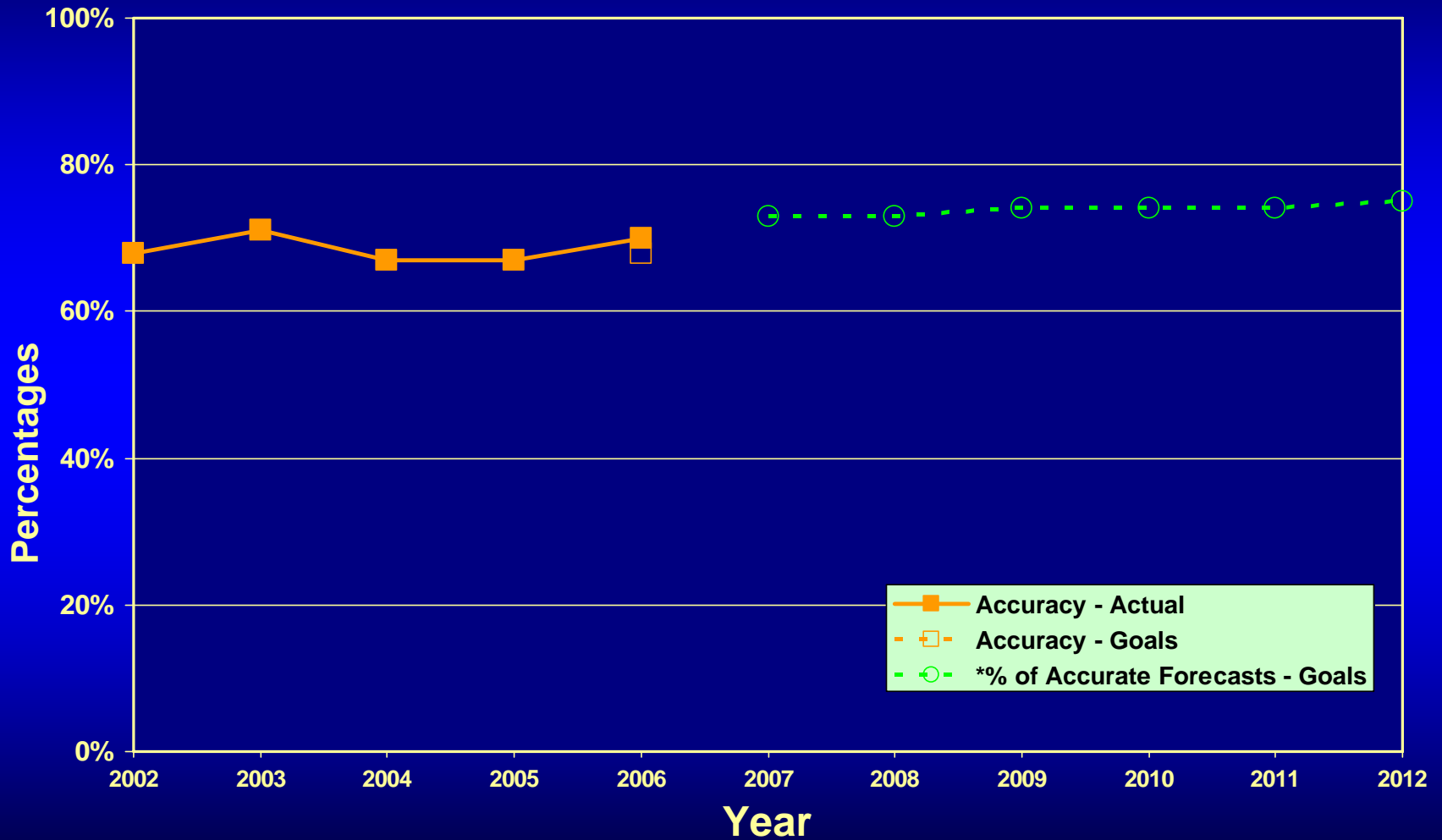


*\* New performance measures to best represent forecast accuracy.*

**"America's Weather Enterprise: Protecting Lives, Livelihoods, and Your Way of Life"**



# Marine Wave Height Forecasts



*\* New performance measures to best represent forecast accuracy.*

**"America's Weather Enterprise: Protecting Lives, Livelihoods, and Your Way of Life"**