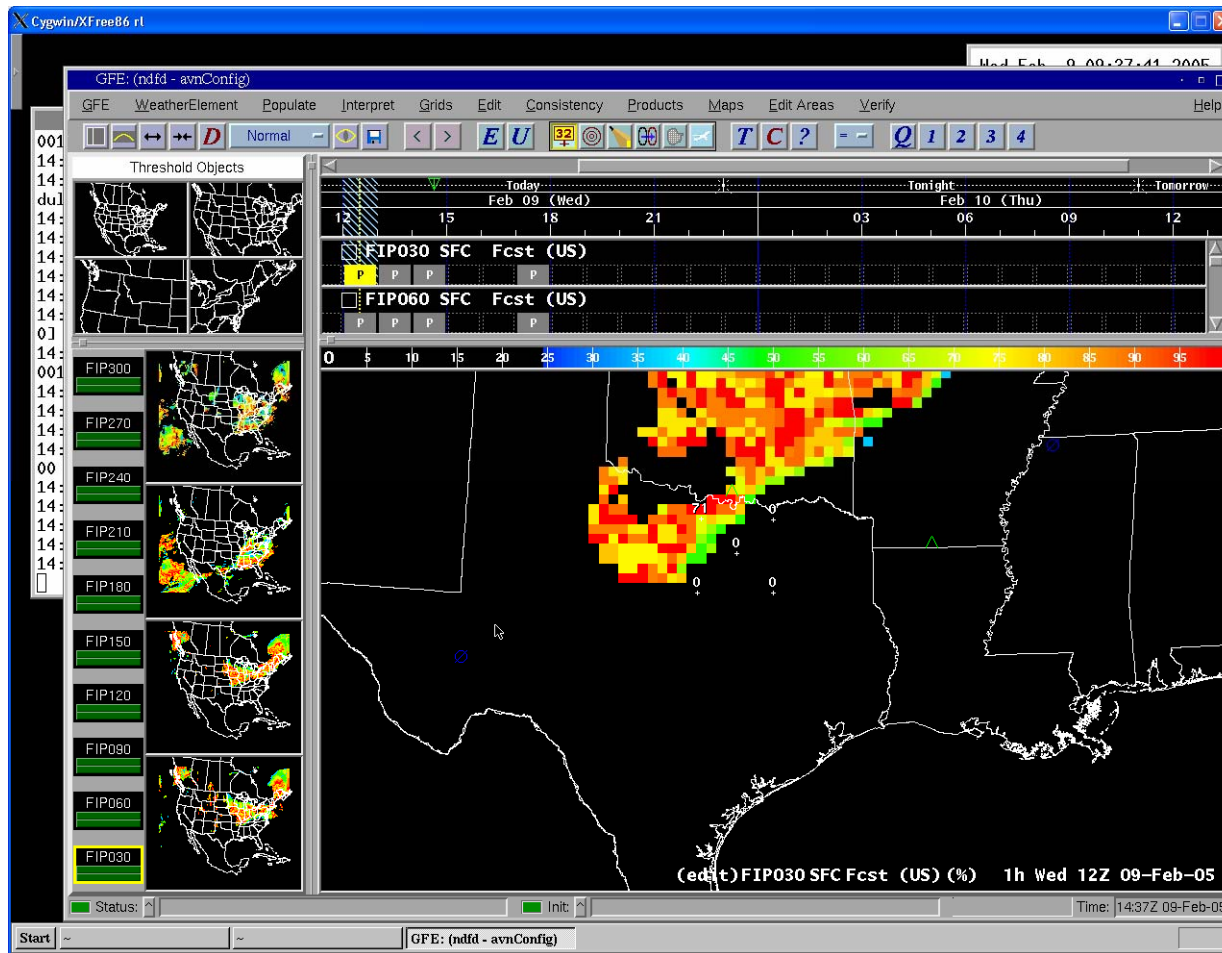
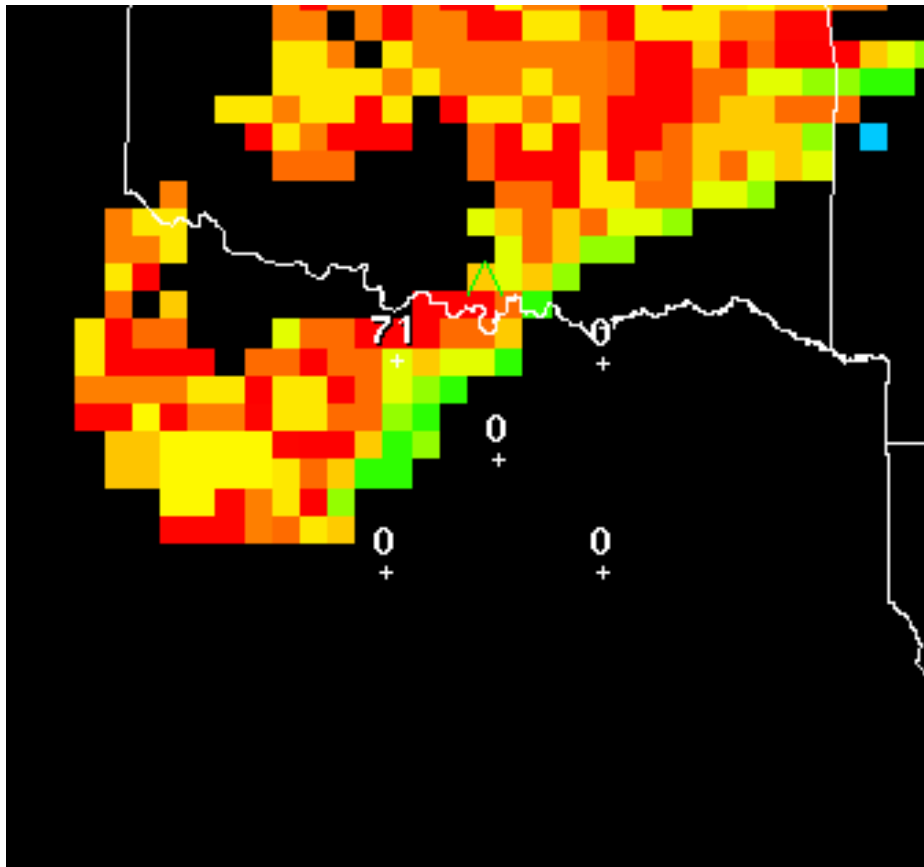


TRACON Tactical Decision Aid Demonstration

Editing Icing Potential Grid



Close-up of TRACON Area



- DFW airport
- Four cornerposts

Decision Aid Display connected to local host

Tactical Decision Corner Post Display for KFWD

| | 17Z | 18Z | 19Z | 20Z | 21Z | 22Z | 23Z | 00Z | 01Z |
|-----|------|----------|------------|------------|----------|----------|----------|------|----------|
| UKW | Open | Open | Marginal | Marginal | Marginal | Marginal | Open | Open | Open |
| BYP | Open | Marginal | Closed Off | Closed Off | Marginal | Marginal | Open | Open | Open |
| JEN | Open | Open | Open | Open | Marginal | Open | Open | Open | Marginal |
| CQY | Open | Open | Open | Marginal | Marginal | Marginal | Open | Open | Open |
| DFW | Open | Open | Marginal | Marginal | Marginal | Marginal | Marginal | Open | Open |

fip 0, sip 0, fis 0
gtg 50
tst 65

Forecast Time

0427/1700Z

◆ newest

◆ updated

Legend

Missing



Open



Marginal



Closed Off



Edit Mode

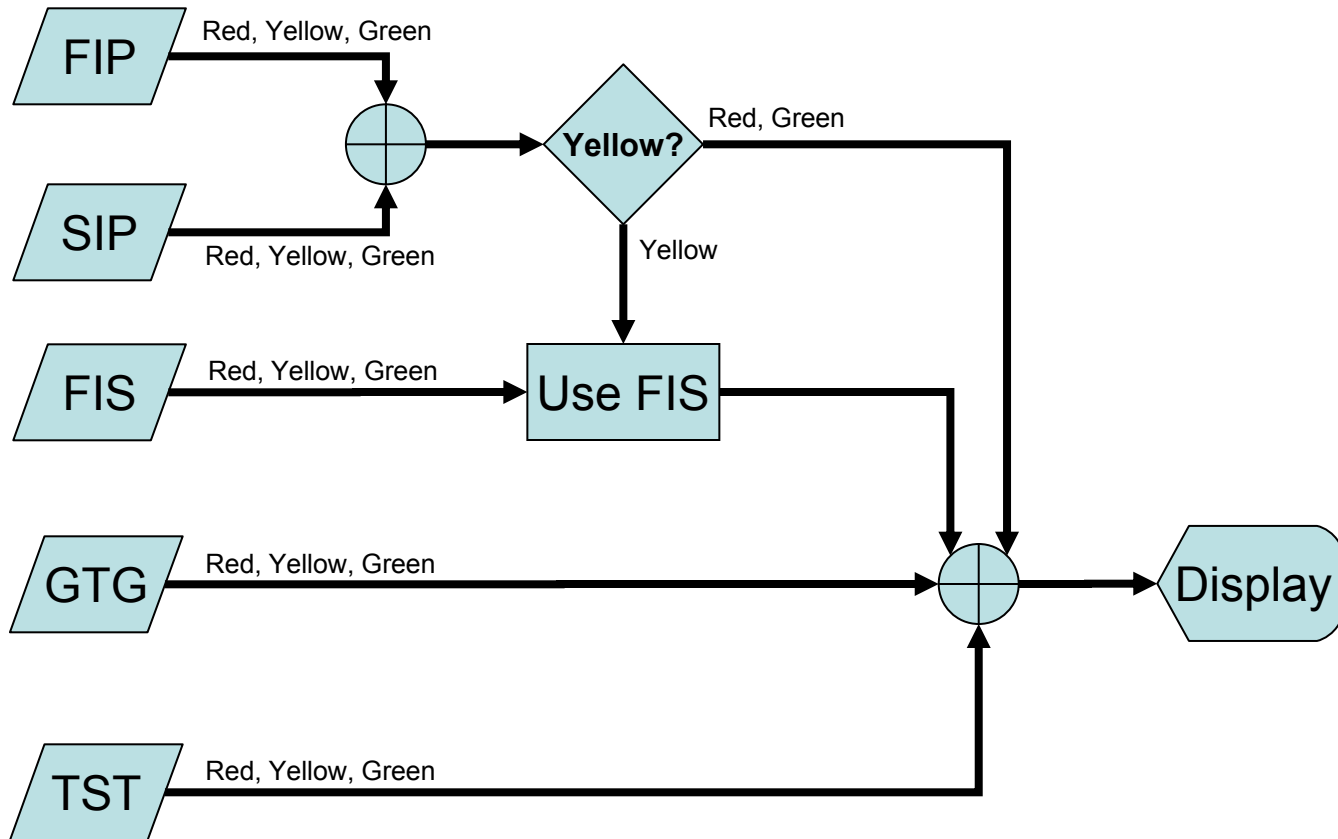
Save

Update

Dump

Quit

TRACON Status Algorithm (Graphic)



TRACON Status Algorithm (Text)

- Inputs
- Initial color assessment
- FIP/FIS combination
- Icing/turbulence/thunderstorm combination

TRACON Status Inputs

- Icing Potential (FIP)
- Supercooled Water (SIP)
- Icing Severity (FIS)
- Turbulence (GTG)
- Thunderstorm (TST)

TRACON Status Color Assessment

- Green (<30)
- Yellow (30-60)
- Red (>60)
- Thresholds readily configured.

Combinations

- FIP/FIS Combination
 - Take the worst of FIP/SIP.
 - Likely the wrong way to use SIP.
 - If FIP/SIP yields Yellow, then use FIS.
 - FIS acts as a “tie breaker.”
- Icing/turbulence/thunderstorm Combination
 - Use worst case.