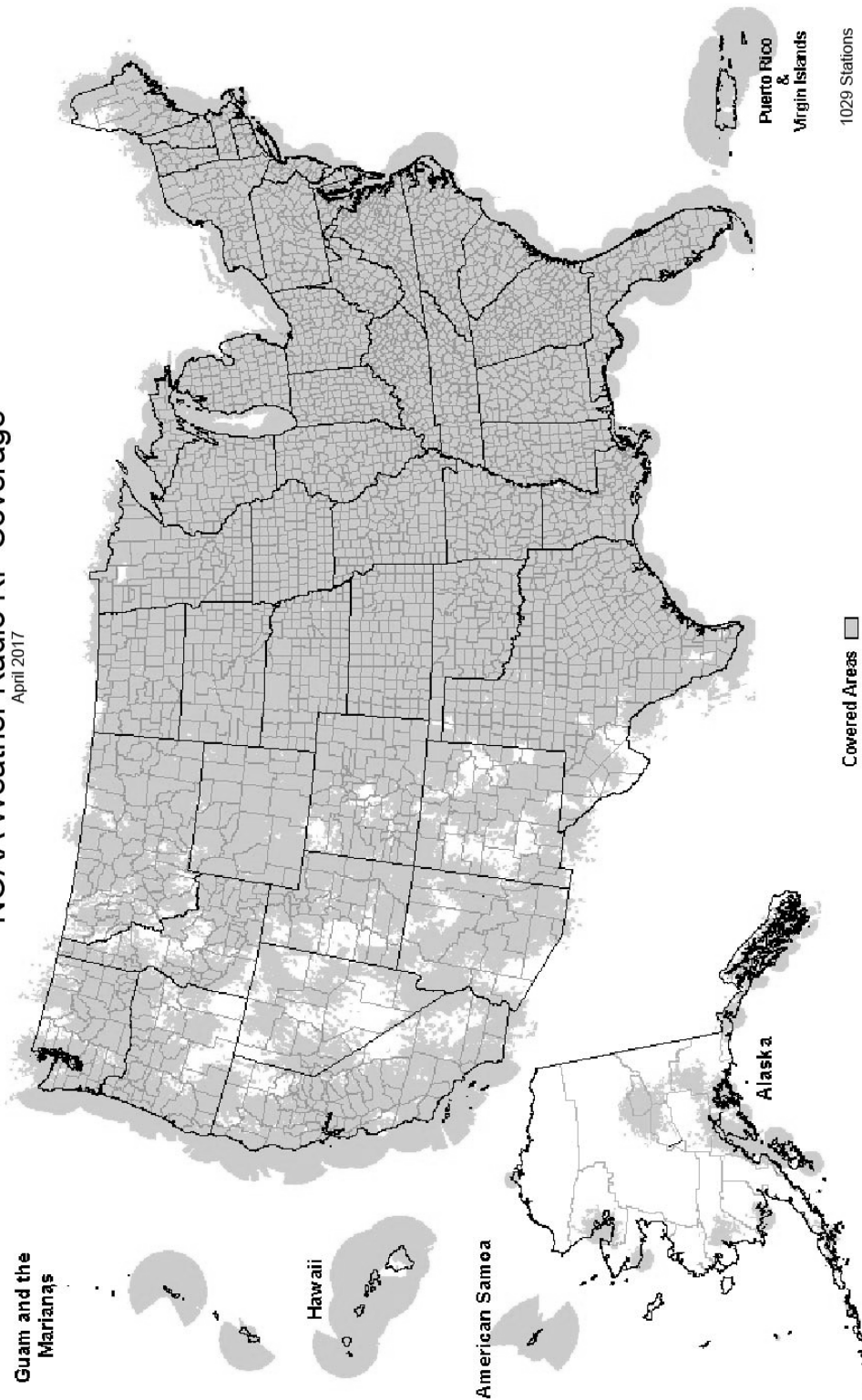
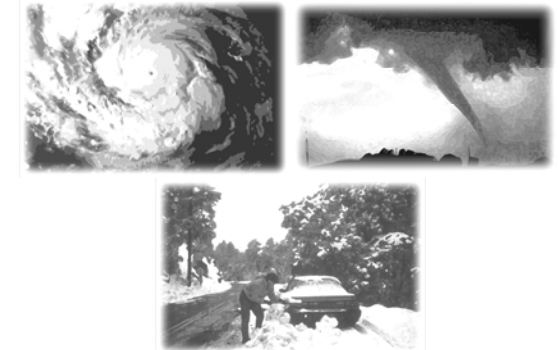


NOAA Weather Radio RF Coverage
April 2017



NOAA/PA 94062
Rev April 2017



**The Voice of NOAA's
National Weather Service**

< Over 1000 Transmitters >

**Broadcasting Continuous
Weather Information on the
Following Frequencies:**

- 162.400 MHz
- 162.425 MHz
- 162.450 MHz
- 162.475 MHz
- 162.500 MHz
- 162.525 MHz
- 162.550 MHz

U.S. Department of Commerce
National Oceanic and Atmospheric Administration
National Weather Service

<http://www.weather.gov/nwr/>

NOAA WEATHER RADIO

The Voice of NOAA's National Weather Service

<http://www.weather.gov/nwr>

NOAA Weather Radio is a service of the National Oceanic and Atmospheric Administration (NOAA) of the U.S. Department of Commerce. As the "voice of the National Weather Service," it provides continuous broadcasts (24 hours a day) of the latest weather information from local National Weather Service offices. Weather messages are repeated every 4 to 6 minutes and are routinely updated every 1 to 6 hours or more frequently in rapidly changing local weather or if a nearby natural hazardous or manmade condition exists.



The regular broadcasts are specifically tailored to weather information needs of the people within the service area of the transmitter. For example, in addition to general weather information, stations in coastal areas provide information of interest to mariners. Other specialized information, such as hydrological forecasts and other climate data may be broadcast.

During severe weather, National Weather Service forecasters can interrupt the routine weather broadcasts and insert special warning messages concerning imminent threats to life and property. The forecaster can also add special signals to warnings that trigger "alerting" features of specially equipped receivers. In the simplest case, this signal activates audible or visual alarms, indicating that an emergency condition exists within the broadcast areas of the station being monitored, and alerts the listener to turn up the volume and stay tuned for more information. More sophisticated receivers are automatically turned on and set to an audible volume when an alert is received.

In the most sophisticated alerting system, NOAA Weather Radio Specific Area Message Encoding (SAME), digital coding is employed to activate only those special receivers programmed for specific emergency conditions in specific area, typically a county. SAME can activate specially equipped radio and cable television receivers and provide a short text message that identifies the location and type of emergency. SAME is the primary activator for the FCC Emergency Alert System (EAS).

To program NWR SAME receivers with the proper county(s) and marine area(s) of choice, you need to know the 6-digit SAME code number(s) for that county(s). Once you have your code number(s), follow the manufacturer's directions for programming your NWR SAME receiver. You can obtain your SAME code numbers by dialing:

888-NWR-SAME (888-697-7263) – Voice & TTY/TTD Accessible

Under a January 1975 White House policy statement, NOAA Weather Radio was designated the sole Government-operated radio system to provide direct warning into private homes for both

San Juan	162.400
RHODE ISLAND	
Providence	162.400
SOUTH CAROLINA	
Aiken	162.450
Aynor	162.400
Barnwell	162.500
Beaufort	162.450
Charleston	162.550
Cheraw	162.450
Columbia	162.400
Cross	162.475
Florence	162.550
Georgetown	162.500
Greenville	162.550
Jasper County	162.400
Kirksey	162.425
Orangeburg	162.525
Rock Hill	162.425
Sumter	162.425

SOUTH DAKOTA	
Aberdeen	162.475
Arlington	162.525
Faith	162.475
Firesteel	162.425
Hot Springs	162.425
Lead	162.525
Lowry	162.500
Mitchell	162.450
Philip	162.450
Pickstown	162.425
Pierre	162.400
Porcupine	162.500
Rapid City	162.550
Reliance	162.525
Sioux Falls	162.400
South Shore	162.425
Wessington	162.550
White River	162.550

TENNESSEE	
Bristol	162.550
Centerville	162.450
Chattanooga	162.550
Clarksville	162.500
Clifton	162.500
Cookeville	162.400
Dyersburg	162.500
Hickman	162.500
Jackson	162.550
Knoxville	162.475
La Follette	162.450
Lafayette	162.525
Lawrenceburg	162.425
Lobelville	162.525
Memphis	162.475
Nashville	162.550
Shelbyville	162.475
Spencer	162.450
Vale	162.450
Waverly	162.400
Winchester	162.525

TEXAS	
Abilene	162.400
Alpine	162.550
Amarillo	162.550
Austin	162.400
Bay City	162.425
Beaumont	162.475

Big Spring	162.475
Borger	162.400
Brownsville	162.550
Bryan	162.550
Burkeville	162.425
Carrizo Springs	162.550
Center	162.525
Childress	162.525
Cisco	162.500
Coleman	162.475
Corpus Christi	162.550
Corsicana	162.525
Cumby	162.500
Dallas	162.400
Del Rio	162.400
D'Hanis	162.525
Dickens	162.500
Dilley	162.500
El Paso	162.475
El Paso Spanish	162.550
Fort Worth	162.550
Galveston	162.550
Gilmer	162.425
Gonzales	162.525
Guadalupe Mt Nat'l. Park	162.525
Junction	162.475
Kerrville	162.450
La Grange	162.500
Laredo	162.550
Llano	162.425
Lubbock	162.400
Lufkin	162.550
Marietta	162.525
Miami	162.450
Midland/Odessa	162.400
Milano	162.525
Mineral Wells	162.525
Muenster	162.425
New Taiton	162.450
Onalaska	162.500
Ozona	162.500
Palestine	162.450
Paris	162.550
Pecos	162.450
Perryton	162.475
Pharr	162.400
Pharr Spanish	162.475
Plainview	162.450
Port O'Connor	162.475
Richland Springs	162.525
Richmond	162.475
Rio Grande City	162.425
Riviera	162.525
San Angelo	162.550
San Antonio	162.550
Seguin	162.475
Seminole	162.425
Sherman	162.475
Stephenville	162.450
Summerfield	162.500
Sweetwater	162.425
Texarkana	162.550
Three Rivers	162.450
Throckmorton	162.425
Tomball	162.400
Tyler	162.475
Uvalde	162.425
Victoria	162.400
Waco	162.475
Wichita Falls	162.475

UTAH	
Bear Lake	162.500

Castle Dale	162.500
Coalville/ Park City	162.475
Escalante	162.425
Lake Powell	162.550
Logan	162.400
Manti	162.425
Milford/Cedar City	162.400
Moab	162.475
Monticello	162.450
Salt Lake City	162.550
St. George	162.475
Tabiona	162.550
Tooele (South Mountain)	162.450
Tooele (Vernon Hills)	162.525
Vernal	162.400
Wendover	162.475

VERMONT	
Burlington	162.400
Castleton	162.500
Marlboro	162.425
St. Johnsbury	162.425
Windsor	162.475

VIRGIN ISLANDS	
St. Croix	162.500

VIRGINIA	
Accomack	162.525
Covesville	162.450
Fredericksburg	162.425
Heathsville	162.400
Lynchburg	162.550
Manassas	162.550
Norfolk	162.550
Richlands	162.425
Richmond	162.475
Roanoke	162.475
Sand Mtn	162.450
South Boston	162.525

WASHINGTON	
Astoria	162.400
Capitol Peak	162.475
Cle Elum	162.400
Davis Peak	162.525
Dayton	162.525
Forks	162.425
H Street - Blaine Area	162.525
Neah Bay	162.550
Okanogan	162.525
Plymouth	162.425
Puget Sound Marine	162.425
Randle	162.425
Richland	162.425
Seattle	162.550
Spokane	162.400
Wenatchee	162.475
Yakima	162.550

WEST VIRGINIA	
Backbone Mountain	162.450
Beckley	162.550
Charleston	162.400
Clarksburg	162.550

Garfield	162.500
Gilbert	162.475
Greggs Knob	162.500
Hinton	162.425
Monteville	162.525
Moorefield	162.400
Morgantown	162.475
Sutton	162.450

WISCONSIN	
Ashland	162.525
Baraboo	162.450
Black River Falls	162.500
Coloma	162.400
Crandon	162.450
Dubuque	162.400
Fond Du Lac	162.500
Green Bay	162.550
Gresham	162.500
Janesville	162.425
Ladysmith	162.550
Madison	162.550
Menomonie	162.400
Milwaukee	162.400
New London	162.525
Park Falls	162.500
Prairie Du Chien	162.500
Racine	162.450
Rhineland	162.400
Richland Center	162.475
Sheboygan	162.525
Sister Bay	162.425
Spooner	162.475
Tomah	162.525
Wausau	162.475
Wausaukee	162.400
Winona	162.425
Withee	162.425

WYOMING	
Afton	162.475
Casper	162.400
Cheyenne	162.550
Cody	162.400
Dubois	162.450
Elk Plaza	162.425
Evanston	162.450
Gillette	162.500
Glendo	162.450
Grant Village	162.450
Jackson	162.525
Kaycee	162.550
Kemmerer	162.525
Lander	162.475
Newcastle	162.475
Pinedale	162.500
Rawlins	162.425
Rock Springs	162.550
Sheridan	162.475
Thermopolis	162.500
Worland	162.525

As of April, 2017 NOAA is operating 1029 stations across the United States and its territories.

The National Weather Service requests your assistance in reporting any outages of NOAA Weather Broadcast Stations.

Please use our Toll Free Number (888) 697-7263 or send an Email to nwroutage@noaa.gov to report the outage.

Doniphan.....	162.450
El Dorado Springs.....	162.475
Eldon.....	162.550
Fredericktown.....	162.500
Gainesville.....	162.425
Hannibal.....	162.475
Hermitage.....	162.450
Jamestown.....	162.425
Joplin.....	162.550
Kansas City.....	162.550
La Plata.....	162.525
Lancaster.....	162.550
Maryville.....	162.425
Medill.....	162.450
Neosho.....	162.450
Piedmont.....	162.425
Springfield.....	162.400
St. Louis.....	162.550
Summersville.....	162.475
Trenton.....	162.500
Wardell.....	162.525
West Plains.....	162.525

MONTANA

Baker.....	162.550
Belgian Hill.....	162.500
Billings.....	162.550
Bozeman.....	162.500
Broadus.....	162.425
Browning.....	162.525
Butte.....	162.550
Circle.....	162.550
Dillon.....	162.475
Ekalaka.....	162.475
Forsyth.....	162.525
Glasgow.....	162.400
Glendive.....	162.475
Glentana.....	162.525
Great Falls.....	162.550
Hardin.....	162.450
Havre.....	162.400
Helena.....	162.400
Jordan.....	162.500
Kalispell.....	162.550
Lewistown.....	162.500
Livingston.....	162.525
Malta.....	162.475
Miles City.....	162.400
Missoula.....	162.400
Plentywood.....	162.475
Poplar.....	162.425
Ryegate.....	162.450
Scobey.....	162.450
Wibaux.....	162.500
Winnett.....	162.400

NEBRASKA

Albion.....	162.500
Bassett.....	162.475
Beatrice.....	162.450
Cambridge.....	162.525
Chadron.....	162.525
Columbus.....	162.450
Grand Island.....	162.400
Holdrege.....	162.475
Lexington.....	162.425
Lincoln.....	162.475
Merna.....	162.500
Merriman.....	162.400
Mullen.....	162.425
Norfolk.....	162.550
North Platte.....	162.550
Omaha.....	162.400

NEVADA

Battle Mtn.....	162.425
Bullhead City.....	162.500
Elko.....	162.550
Ely.....	162.400
Eureka.....	162.550
Fernley.....	162.450
Hawthorne.....	162.475
Jackpot.....	162.500
Las Vegas.....	162.550
Las Vegas.....	162.550
Pahrump.....	162.400
Reno.....	162.550
Tonopah.....	162.400
Winnemucca.....	162.400

NEW HAMPSHIRE

Clarksville.....	162.400
Concord.....	162.400
Deerfield.....	162.450
Hanover.....	162.525
Holderness.....	162.550
Mt. Washington.....	162.500
Pack Monadnock.....	162.525

NEW JERSEY

Atlantic City.....	162.400
Hardyston.....	162.500
Southard.....	162.450

NEW MEXICO

Albuquerque.....	162.400
Artesia.....	162.425
Carlsbad.....	162.475
Des Moines.....	162.550
Farmington.....	162.475
Hobbs.....	162.400
Las Cruces.....	162.400
Portales.....	162.475
Roswell.....	162.450
Ruidoso.....	162.550
Santa Fe.....	162.550
Silver City.....	162.425

NEW YORK

Albany.....	162.550
Binghamton.....	162.475
Buffalo.....	162.550
Call Hill.....	162.425
Cattaraugus.....	162.425
Cooperstown.....	162.450
Elmira.....	162.400
Frewsburg.....	162.525
Gore Mtn.....	162.450
Highland.....	162.475
Ithaca.....	162.500
Lyons.....	162.475
Middleville.....	162.425
Mt. Washington.....	162.450
New York City.....	162.550
Norwich.....	162.525
Riverhead.....	162.475
Rochester.....	162.400

Spencerport.....	162.525
Stamford.....	162.400
Syracuse.....	162.550
Walton.....	162.425
Watertown.....	162.475
White Hill.....	162.525

NORTH CAROLINA

Asheville.....	162.400
Buck Mountain.....	162.500
Cape Hatteras.....	162.475
Chapel Hill.....	162.550
Charlotte.....	162.475
Ellerbe.....	162.400
Garner.....	162.450
Henderson.....	162.500
Linville.....	162.450
Mamie.....	162.425
Margarettsville.....	162.450
Mooresville.....	162.525
Mount Jefferson.....	162.500
New Bern.....	162.400
Robbinsville.....	162.525
Rocky Mount.....	162.475
Saint Pauls.....	162.475
Warsaw.....	162.425
Windsor.....	162.525
Winnabow.....	162.550
Winston-Salem.....	162.400

NORTH DAKOTA

Bismarck.....	162.475
Cavalier.....	162.450
Dickinson.....	162.400
Fargo.....	162.475
Fort Ransom.....	162.525
Grand Forks.....	162.475
Jamestown.....	162.550
Langdon.....	162.500
Minot.....	162.400
New Town.....	162.525
Petersburg.....	162.400
Rolla.....	162.475
Scranton.....	162.525
Sheyenne.....	162.525
Steele.....	162.400
Webster.....	162.425
Williston.....	162.550
Willow City.....	162.450

NORTHERN MARIANA ISLANDS

Saipan.....	162.550
-------------	---------

OHIO

Akron.....	162.400
Athens.....	162.425
Bridgeport.....	162.525
Carey.....	162.525
Chillicothe.....	162.500
Cleveland.....	162.550
Columbus.....	162.550
Dayton.....	162.475
Grafton.....	162.500
High Hill.....	162.475
Lima.....	162.400
Mansfield.....	162.450
Marietta.....	162.400
New Philadelphia.....	162.425
Otway.....	162.525
Sandusky.....	162.400
Toledo.....	162.500
Youngstown.....	162.500

OKLAHOMA

Altus.....	162.425
Antlers.....	162.400
Ardmore.....	162.525
Atoka.....	162.500
Bartlesville.....	162.425
Broken Bow.....	162.450
Chickasha.....	162.450
Clinton.....	162.525
Enid.....	162.475
Grove.....	162.525
Guymon.....	162.500
Lawton.....	162.550
McAlester.....	162.475
Oklahoma City.....	162.400
Oktaha.....	162.525
Ponca City.....	162.450
Stillwater.....	162.500
Tulsa.....	162.550
Wewoka.....	162.550
Woodward.....	162.500

OREGON

Bend/Redmond.....	162.500
Brookings.....	162.550
Burns Butte.....	162.475
Cape Blanco.....	162.425
Carney Butte.....	162.475
Coos Bay.....	162.400
Eugene.....	162.400
Florence.....	162.500
Fossil.....	162.550
Hepner.....	162.425
John Day.....	162.500
Klamath Falls.....	162.550
Medford.....	162.400
Mt Hebo.....	162.525
Mt. Ashland.....	162.475
Neahkahnie.....	162.425
Newport.....	162.550
Portland.....	162.550
Reedsport.....	162.525
Roseburg.....	162.550
Salem.....	162.475
Spout Springs.....	162.400
The Dalles.....	162.400
Tillamook.....	162.475

PENNSYLVANIA

Allentown.....	162.400
Altoona.....	162.425
Clearfield.....	162.550
Coudersport.....	162.500
Erie.....	162.400
Harrisburg.....	162.550
Hibernia Park.....	162.425
Honesdale.....	162.450
Huntingdon.....	162.525
Johnstown.....	162.400
Meadville.....	162.475
Parker.....	162.425
Philadelphia.....	162.475
Pittsburgh.....	162.550
Reynoldsville.....	162.500
State College.....	162.475
Towanda.....	162.525
Warren.....	162.450
Wellsboro.....	162.475
Wilkes-Barre.....	162.550
Williamsport.....	162.400

PUERTO RICO

Maricao.....	162.550
--------------	---------

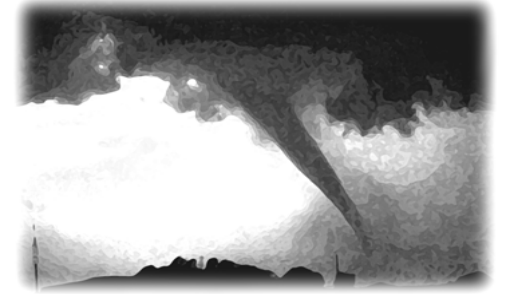
natural disasters and nuclear attack. This concept has been expanded to include warnings for all hazardous conditions that pose a threat to life and safety, both at a local and national level. As a result, NOAA Weather Radio is being better integrated with other National Weather Service systems to provide state and local emergency managers and other warning providers better access to local weather forecast offices, allowing hazard warnings of all types to be broadcast on NOAA Weather Radio within seconds

NOAA Weather Radio currently broadcasts from 1029 stations in fifty states, Puerto Rico, the U.S. Virgin Islands, American Samoa, Guam, and Saipan on seven frequencies in the VHF band, ranging from 162.400 to 162.550 megahertz (MHz). These frequencies are outside the normal AM or FM broadcast bands.

Special radios that receive only NOAA Weather Radio, both with and without special alerting features, are available from numerous manufacturers. In addition, other manufacturers are including NWR capability in a variety of receivers. NOAA Weather Radio capability is currently available on automobile, aircraft, marine, citizens band, and standard AM/FM radios as well as communications receivers, transceivers, scanners, and cable TV.

By nature and design, NOAA Weather Radio coverage is limited to an area within 40 miles of the transmitter. The quality of reception is dictated by transmitter distance, local terrain, and the quality and location of the receiver. In general, those using a high quality receiver on flat terrain or at sea can expect reliable reception beyond 40 miles. Those with standard receivers, surrounded by large buildings in cities and those in mountain valleys may experience little or no reception at considerably less than 40 miles. If possible, a receiver should be tested in the location where it will be used prior to purchase.

NOAA Weather Radio is directly available to a large portion of the U.S. population. The National Weather Service is currently engaged in a program to increase coverage to at least 95 percent of the population.



If you have a question regarding the technical aspects of NOAA Weather Radio such as transmitter location, reception, and characteristics or if you are interested in becoming a partner with the National Weather Service to identify or provide local funding and/or facilities for the installation of a NOAA Weather Radio transmitter, please contact your local National Weather Service Office or send a letter to:

National Weather Service
 Attn: Dissemination Systems Branch, W/OPS17
 1325 East-West Highway
 Silver Spring, MD 20910

The following is a listing of operational stations by state. For specific coverage information for your local area please visit our website at:

<http://www.weather.gov/nwr/>

ALABAMA

Anniston	162.475
Arab	162.525
Auburn	162.525
Birmingham	162.550
Brewton	162.475
Columbus	162.400
Cullman	162.450
Demopolis	162.475
Dozier	162.550
Florence	162.475
Greenville	162.425
Henagar	162.500
Huntsville	162.400
Jackson	162.500
Louisville	162.475
Mobile	162.550
Montgomery	162.400
Oneonta	162.425
Selma	162.450
Tuscaloosa	162.400
Winfield	162.525

ALASKA

Althorp Peak.....	162.425
Anchorage.....	162.550
Barrow.....	162.550
Bede Mountain	162.450
Bethel.....	162.550
Cape Fanshaw	162.425
Cape Gull	162.500
Cape Hinchinbrook.....	162.525
Cold Bay	162.425
Cordova	162.400
Craig	162.475
Dillingham	162.500
Duke Island	162.450
East Point.....	162.500
Fairbanks	162.550
Glennallen	162.550
Gravina Island.....	162.525
Haines	162.400
Homer	162.400
Juneau	162.550
Ketchikan	162.550
Kodiak	162.550
Kotzebue.....	162.550
Manleyville	162.500
Marmot Island	162.500
Mt. McArthur.....	162.525
Mt. Robert Barron.....	162.450
Nenana	162.400
Ninilichik.....	162.550
Nome	162.550
Pillar Mtn.....	162.525
Point Pigot.....	162.450
Potato Point.....	162.425
Raspberry Island	162.425
Rugged Island.....	162.425
Saint Paul Island	162.525
Sand Point.....	162.550
Seward.....	162.550
Sitka	162.550
Sitkinak Dome.....	162.450
Soldotna	162.475

Sukwan Island	162.425
Tuklung Mtn.....	162.425
Unalaska	162.550
Valdez	162.550
Wasilla	162.400
Whittier.....	162.475
Wrangell.....	162.400
Yakutat.....	162.400
Zarembo Island	162.450

AMERICAN SAMOA

Mt. Ololele.....	162.550
Pago Pago	162.400

ARIZONA

Flagstaff	162.400
Globe.....	162.500
Grand Canyon	162.475
Greer.....	162.525
Kingman	162.425
Lake Havasu	162.400
Nogales	162.500
Payson Gila County N.....	162.425
Phoenix	162.550
Prescott.....	162.525
Safford.....	162.550
Show Low	162.400
Tucson	162.400
Window Rock	162.550

ARKANSAS

Cherokee Village	162.475
El Dorado	162.525
Fayetteville.....	162.475
Fort Smith.....	162.550
Fountain Hill	162.475
Gurdon	162.475
Harrison.....	162.525
High Peak	162.425
Jonesboro	162.550
Little Rock	162.550
Marvell.....	162.525
Mena	162.400
Morrilton	162.475
Mountain View.....	162.450
Russell	162.400
Russellville	162.525
Springdale	162.400
Star City	162.400
Yellville	162.500

CALIFORNIA

Avalon	162.525
Bakersfield	162.550
Big Rock Ridge.....	162.500
Bishop	162.425
Coachella	162.400
Coachella / Spanish	162.525
Contra Costa County.....	162.425
Conway Summit	162.525
El Paso Mtns.....	162.425
Eureka	162.400
Fresno	162.400
Grass Valley	162.400
Horse Mtn	162.450
Los Angeles	162.550
Malibu Marine.....	162.425
Monterey	162.550
Monterey Marine	162.450
Point Arena	162.550
Redding	162.550
Sacramento	162.550
San Diego	162.400

San Diego Marine.....	162.425
San Francisco	162.400
San Luis Obispo	162.550
San Simeon.....	162.525
Sandberg.....	162.425
Santa Ana.....	162.450
Santa Barbara	162.400
Santa Barbara Marine	162.475
Sonoma County.....	162.475
Ukiah	162.525
Victorville	162.500
Yosemite	162.450
Yuma	162.550

COLORADO

Alamosa	162.475
Anton	162.425
Bethune	162.525
Boyer	162.450
Canon City.....	162.500
Colorado Springs.....	162.475
Deer Trail.....	162.500
Denver	162.550
Dillon	162.400
Durango	162.425
Eagle	162.450
Fort Collins/Ault	162.450
Fort Morgan	162.525
Fowler	162.425
Franktown.....	162.450
Glenwood Springs	162.500
Grand Junction	162.550
Greely	162.400
La Junta	162.500
Lamar	162.525
Mead/Longmont.....	162.475
Montrose	162.450
North Cottonwood.....	162.500
Pueblo	162.400
Springfield	162.400
Steamboat Springs	162.525
Sterling	162.400
Walsenburg	162.450
Wray	162.475

CONNECTICUT

Cornwall	162.500
Hartford	162.475
Meriden	162.400
New London	162.550

DELAWARE

Lewes	162.550
Salisbury	162.475

DISTRICT OF COLUMBIA

Washington DC	162.450
---------------------	---------

FLORIDA

Belle Glade.....	162.400
Daytona Beach	162.400
East Point	162.500
Fort Myers	162.475
Fort Pierce	162.425
Gainesville	162.475
Hialeah Spanish	162.500
Inverness	162.400
Jacksonville	162.550
Key West	162.400
Lake City	162.400
Largo	162.450
Melbourne	162.550
Miami	162.550

Morrison.....	162.550
Naples	162.525
Ocala	162.525
Orlando	162.475
Palatka	162.425
Panama City.....	162.550
Pensacola	162.400
Princeton	162.425
Salem	162.425
Sebring	162.500
Sneads	162.425
Sumterville	162.500
Tallahassee	162.400
Tampa Bay	162.550
Tea Table Key	162.450
Venice	162.400
West Palm Beach	162.475
Westville	162.450

GEORGIA

Americus.....	162.425
Ashburn	162.450
Athens	162.400
Atlanta	162.550
Augusta	162.550
Baxley.....	162.525
Blakely	162.525
Blue Ridge	162.475
Brasstown Bald.....	162.500
Brunswick	162.425
Buchanan	162.425
Chatsworth	162.400
Clayton	162.450
Cleveland.....	162.525
Eastman	162.400
Eatonton	162.525
Jesup.....	162.450
La Grange.....	162.450
Macon	162.475
Metter	162.425
Pelham	162.550
Sandersville	162.450
Summerville.....	162.450
Thomaston	162.500
Toccoa	162.425
Valdosta	162.500
Washington.....	162.500
Waycross	162.475
Waynesboro	162.425

GUAM

Guam.....	162.400
-----------	---------

HAWAII

Hawaii Kai.....	162.450
Kauai	162.400
Kulani Cone	162.550
Maui	162.400
North Kohala.....	162.500
Oahu	162.550
South Point.....	162.550

IDAHO

Boise	162.550
Bonnors Ferry.....	162.500
Burley	162.475
Driggs	162.450
Grangeville	162.450
Lewiston	162.550
McCall	162.475
Orofino	162.500
Payette	162.400
Pocatello	162.550

Salmon	162.500
Sedgwick Peak.....	162.425
Sun Valley	162.450
Twin Falls	162.400

ILLINOIS

Bloomington	162.525
Champaign	162.550
Chester	162.450
Chicago	162.550
Crescent City.....	162.500
Crystal Lake	162.500
DeKalb	162.550
Dixon	162.525
Freeport	162.450
Galesburg	162.400
Hillsboro	162.425
Jacksonville	162.525
Jerseyville	162.450
Kankakee	162.525
Lockport	162.425
Macomb	162.500
Marion	162.425
McLeansboro.....	162.400
Newton	162.450
Odell.....	162.450
Paris	162.525
Peoria	162.475
Plano	162.400
Princeton	162.425
Quad Cities	162.550
Rockford.....	162.475
Salem	162.475
Shelbyville	162.500
Springfield	162.400

INDIANA

Angola	162.425
Bloomington	162.450
Bowling Green	162.425
Evansville	162.550
Fort Wayne	162.550
Georgia	162.500
Hebron	162.450
Indianapolis	162.550
Marion	162.450
Michigan City.....	162.500
Monticello/Lafayette.....	162.475
Muncie	162.425
New Albany	162.475
Newport	162.425
North Webster	162.500
Putnamville.....	162.400
Richmond	162.500
Seymour	162.525
South Bend	162.400

IOWA

Burlington	162.525
Carroll	162.425
Cedar Rapids	162.475
Decorah	162.525
Delaware	162.450
Denison	162.550
Des Moines	162.550
Essex	162.550
Fairfield	162.400
Forest City	162.500
Fort Dodge	162.400
Hancock/Pottawattam.....	162.525
Iowa Falls	162.525
Lake Rathbun	162.425
Lenox	162.450

Maquoketa.....	162.425
Marshalltown	162.500
Milford	162.550
Montezuma.....	162.450
Ottumwa	162.500
Ringsted	162.475
Sanborn	162.525
Sioux City	162.475
St. Ansgar	162.450
Storm Lake	162.450
Van Wert	162.475
Waterloo	162.550

KANSAS

Abilene	162.525
Beaumont	162.500
Belvidere	162.525
Blue Rapids	162.425
Chanute	162.400
Concordia	162.550
Dighton	162.525
Dodge City.....	162.475
Ellsworth.....	162.400
Gem	162.400
Grand Bend	162.500
Halls Summit	162.425
Hays	162.450
Kirwin	162.500
Lenora	162.425
Meade	162.425
Milo	162.525
Saint Joseph.....	162.400
Sharon	162.400
Topeka	162.475
Tribune	162.550
Ulysses	162.450
Wichita	162.550

KENTUCKY

Ashland	162.550
Beattyville	162.500
Bowling Green	162.400
Burkesville	162.475
Campbellsville	162.525
Covington	162.550
East Madison County.....	162.525
Edmonton	162.450
Ekron	162.450
Elizabethtown	162.550
Frankfort	162.500
Frenchburg	162.475
Harlan	162.450
Hazard	162.475
Hopkinsville	162.450
Horse Cave.....	162.500
Irvine.....	162.475
Jackson	162.425
Lexington	162.400
London	162.475
Madison County.....	162.525
Madisonville.....	162.525
Manchester	162.400
Mayfield	162.475
Maysville	162.425
McKee	162.450
Moberly	162.525
Monticello	162.425
Morehead	162.400
Mount Vernon	162.425
Owenton	162.450
Paintsville	162.525
Phelps	162.500
Pikeville	162.400

Pineville	162.525
Somerset	162.550
Stanton	162.550
West Liberty	162.450
West Madison County	162.525
Whitesville.....	162.475
Williamsburg	162.500

LOUISIANA

Alexandria	162.475
Baton Rouge	162.400
Bogalusa	162.525
Buras	162.475
Lafayette	162.550
Lake Charles.....	162.400