



# Science and Technology Seminar



## A New Metric for Hurricane Intensity

**Dr. Mark D. Powell**

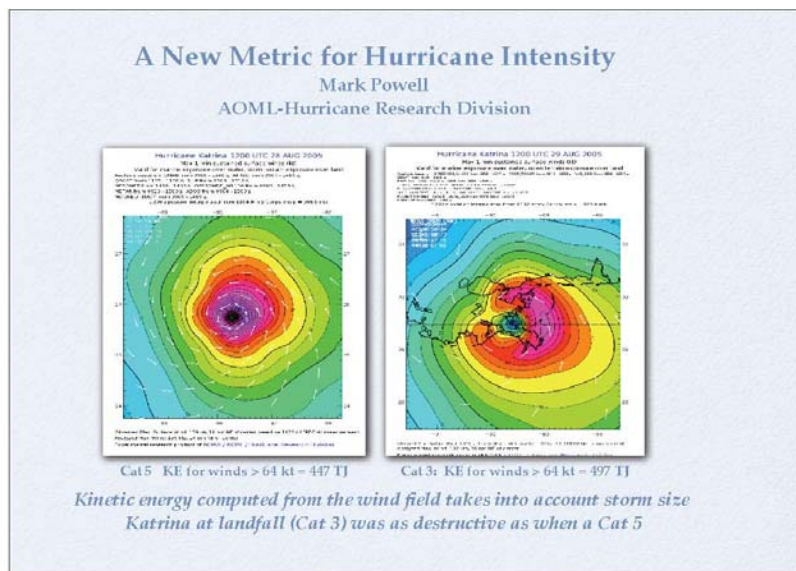
**Atlantic Oceanographic and Meteorological Laboratories**

**Oceanic and Atmospheric Research**

**National Oceanic and Atmospheric Administration**

**U.S. Department of Commerce**

Hurricane Katrina demonstrated that neither the maximum sustained wind speed nor the Saffir Simpson scale can adequately convey a hurricane's potential impact over a large area susceptible to storm surge and wave damage. Kinetic energy calculations from observation-based analyses of the Hurricane's surface wind field have been related to damage, and recent storms have been investigated to examine the range in values associated with damage potential from wind, waves and surge. Both topics will be discussed.



**Tuesday, April 18, 2006  
2:00 - 3:00 P.M.  
SSMC#2, Room 2358**

(Contact: Bob Glahn at (301)713-1768)